

THE DRAWINGS OF III

A Catalogue of Charcoal Drawings

By Artist Timothy Rees

Product of Studio Novo



Copyright © 2012 **Timothy Rees**

All Rights Reserved

ISBN: 148008008X

ISBN-13: 978-1480080089

Forward

In my experience the American university art school approach emphasizes emotion, unity, harmony, and explanation—abstract concepts that leave students with intangible goals and little gain in skill. It does not stress how drawing relates to painting or more importantly, how drawing is a fundamental part of painting. The mention of shape, value, and edge to create realistic drawings is lost within the overemphasis on concept.

Timothy Rees manages to infuse these three fundamental elements with strong compositional design into drawings that look like beautifully executed paintings without the need for lengthy explanation. He handles charcoal like oil paint to create these bold, simple compositions that are yet carefully measured and skillfully rendered. What is more amazing is how he manages to do this in 25 minutes or less. Using the same method, Rees carries out some portraits further into 2 or 3 hour studies, resulting in subtle half tones that further convey the realism of the subject.

With this sizeable collection of drawings, Rees paints a vivid picture of his subjects draped in light and shadow. From the bold to the sensitive, he shows that without need for words, realism can be the very vessel for expressing emotion, unity, and harmony.

Brittany Nopar
BFA Drawing
The Herberger Institute for Design and the Arts
Arizona State University











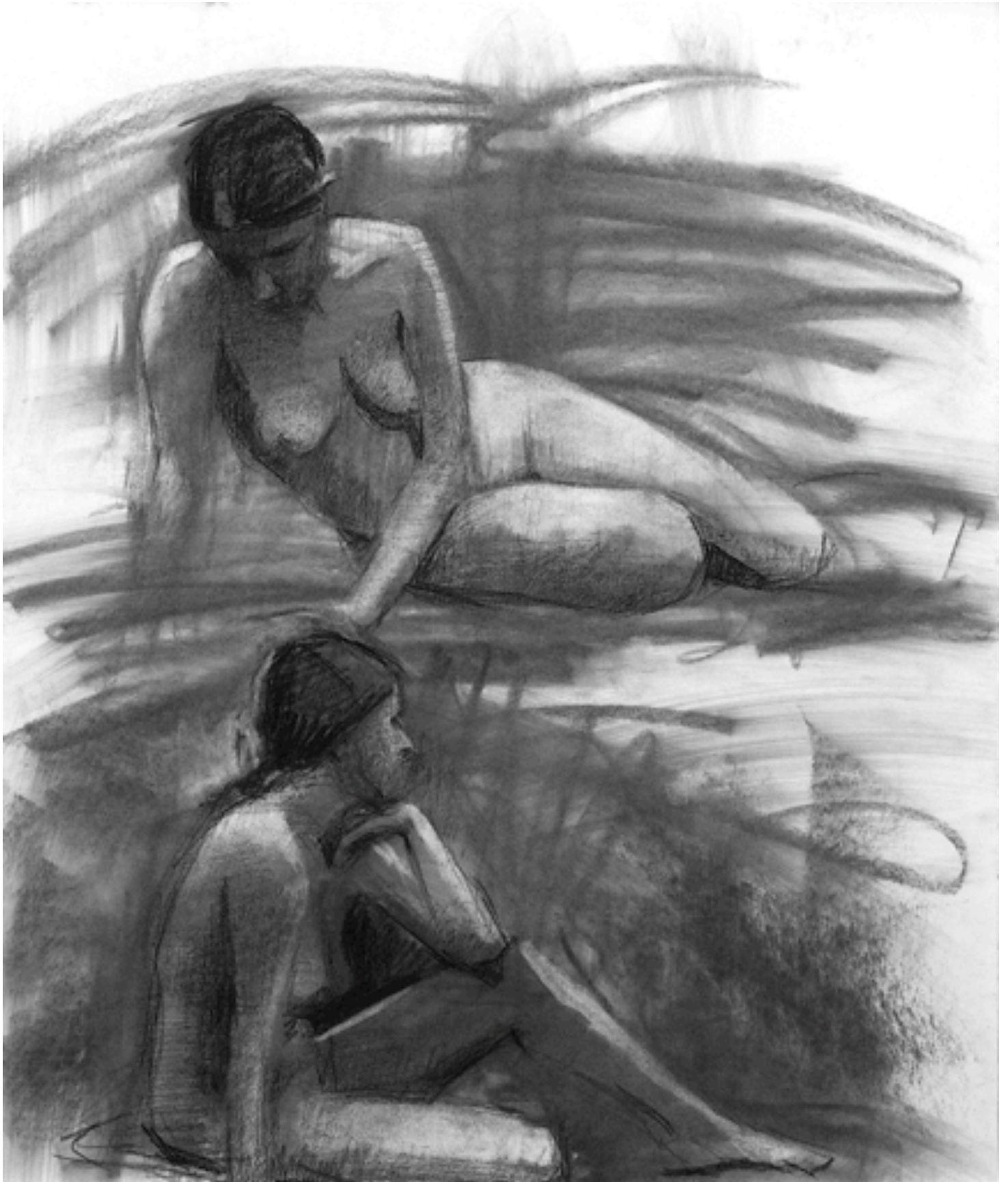
















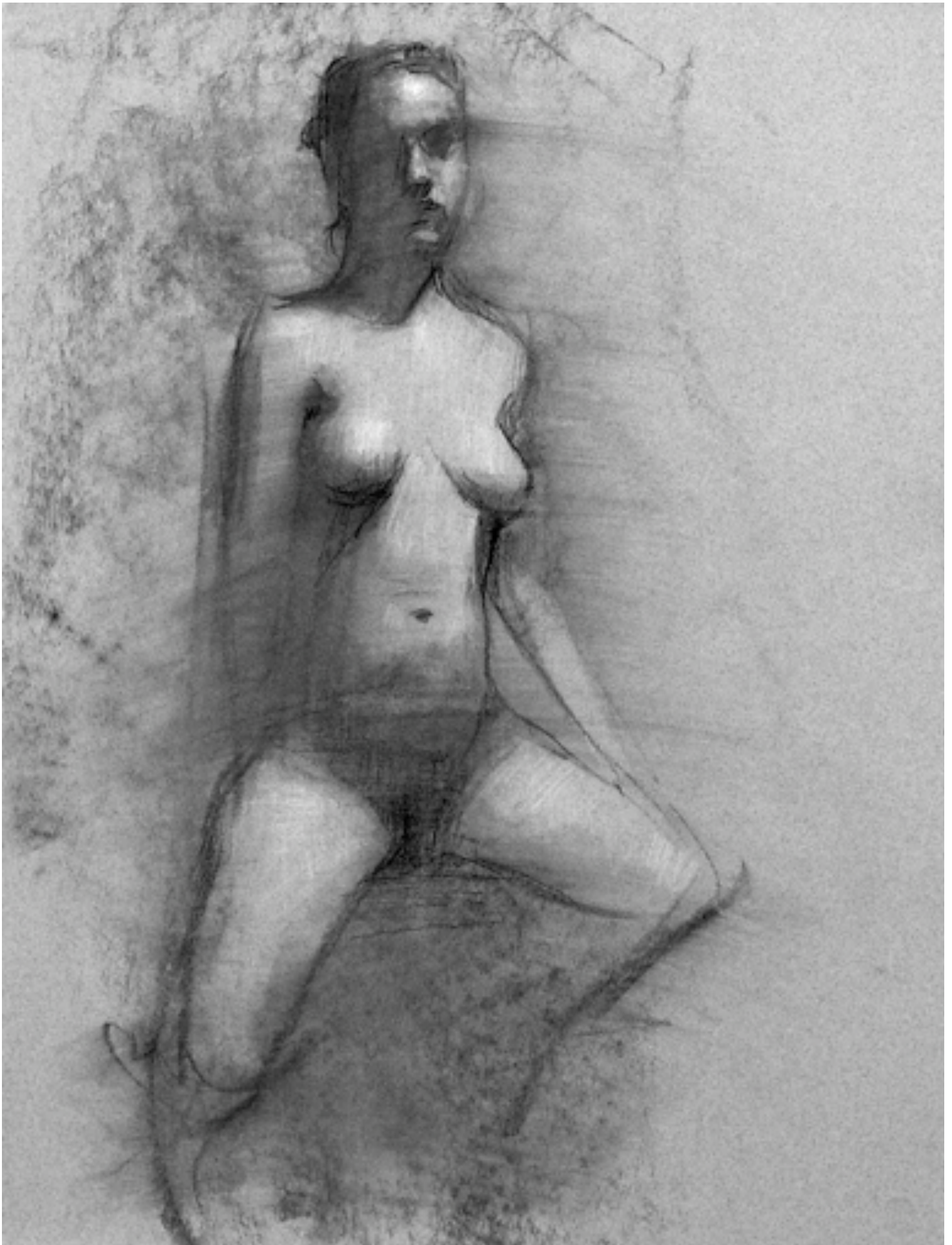




15 min

10 min

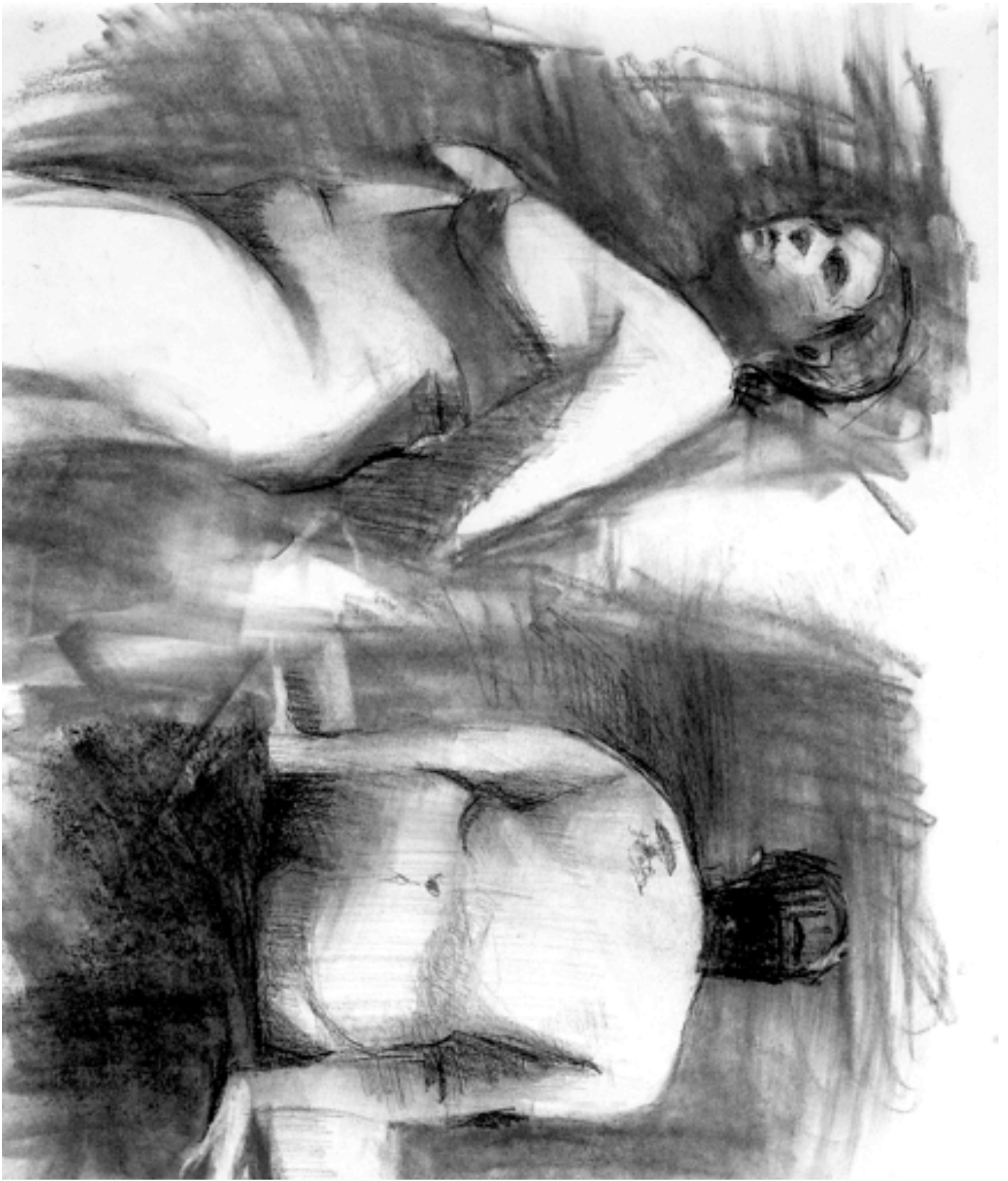














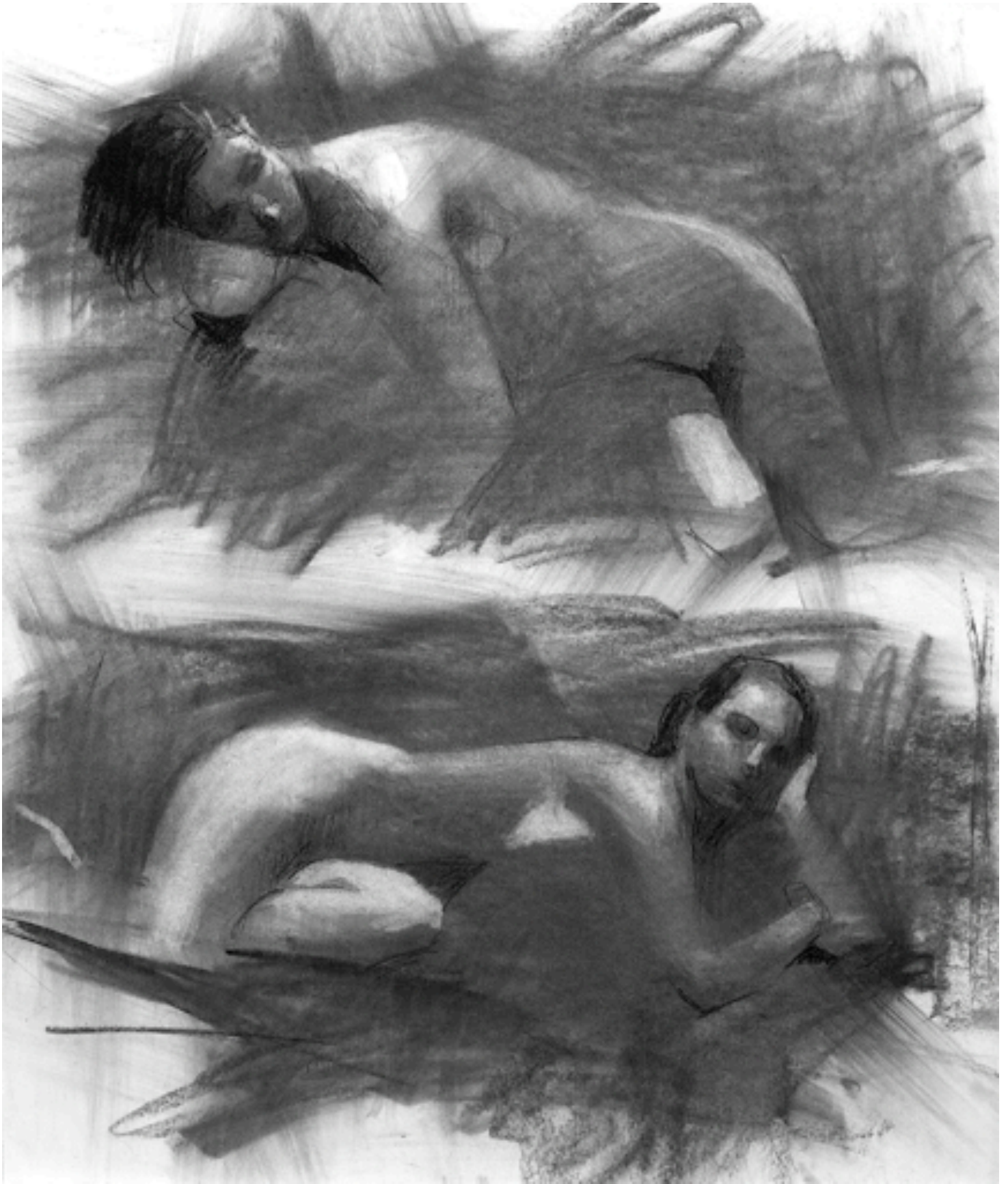














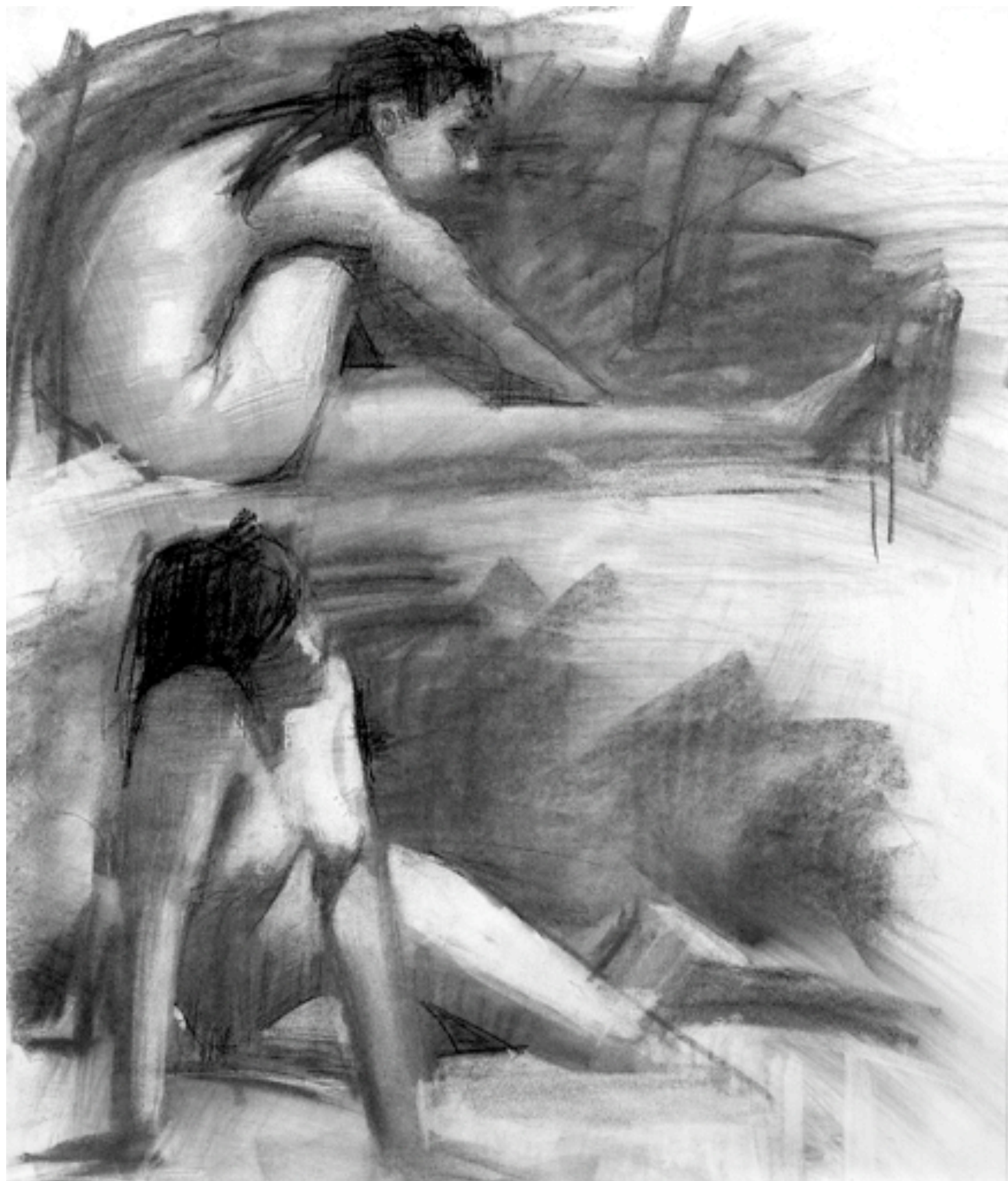










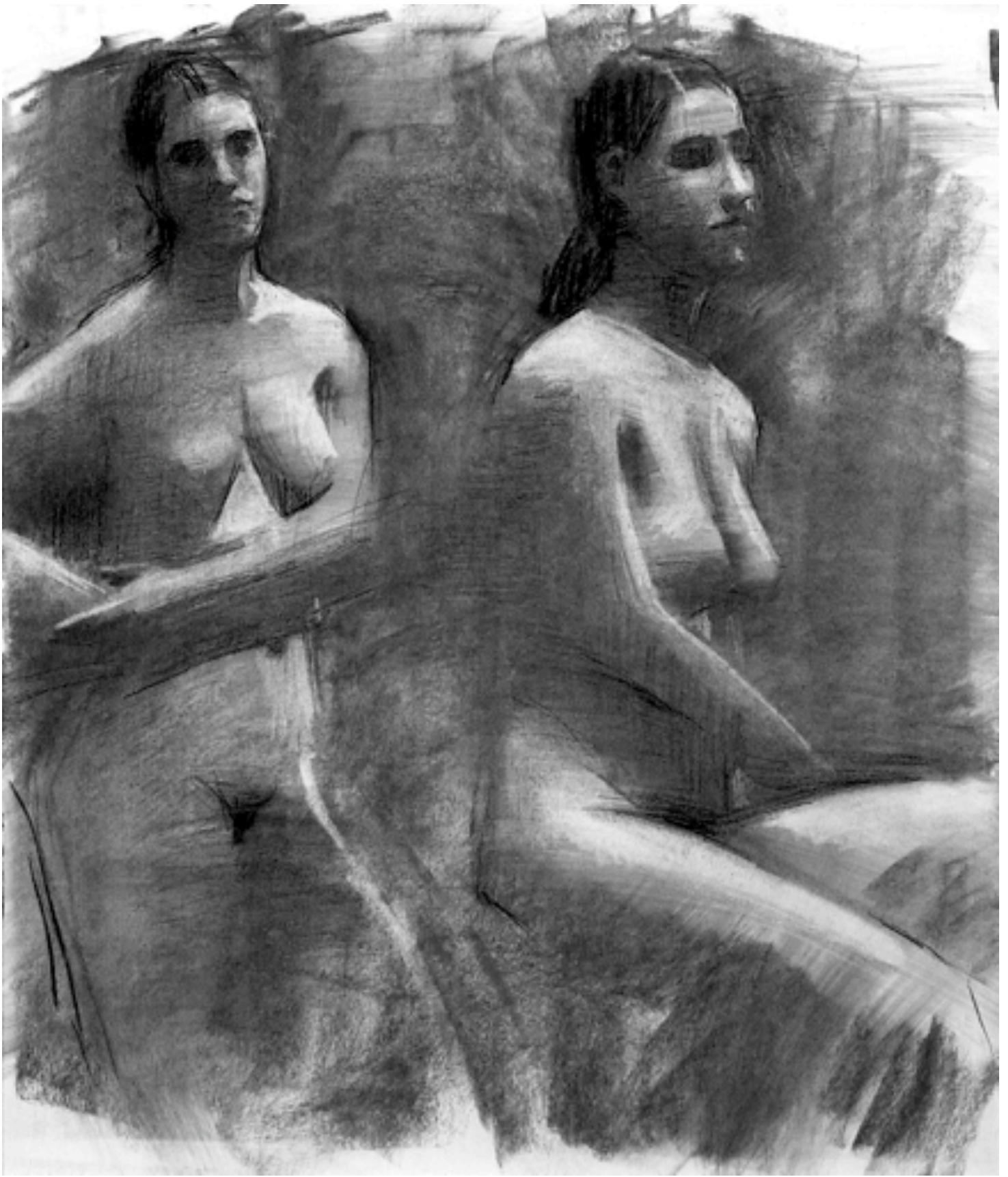




3 min

5 min

p. min





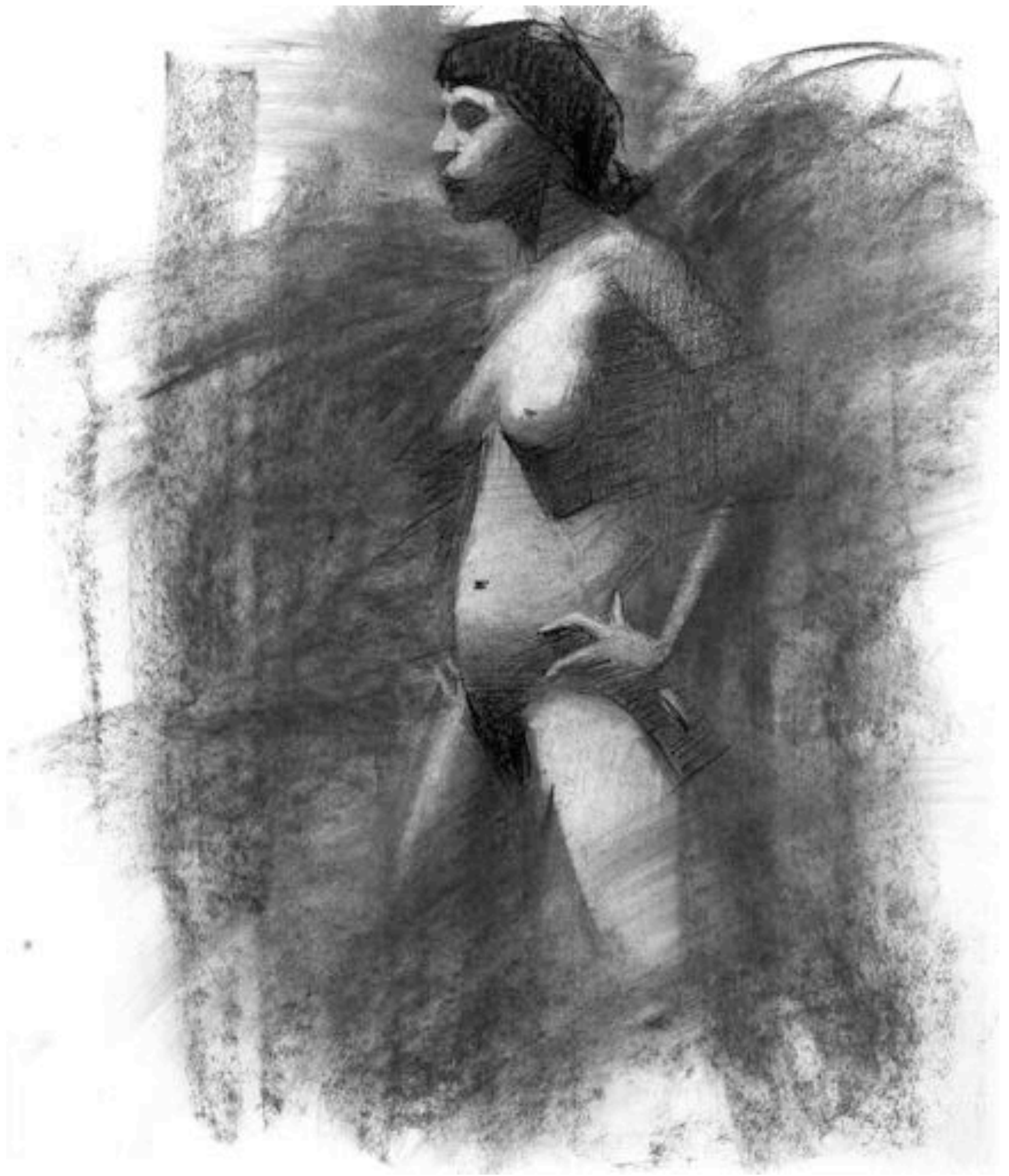




























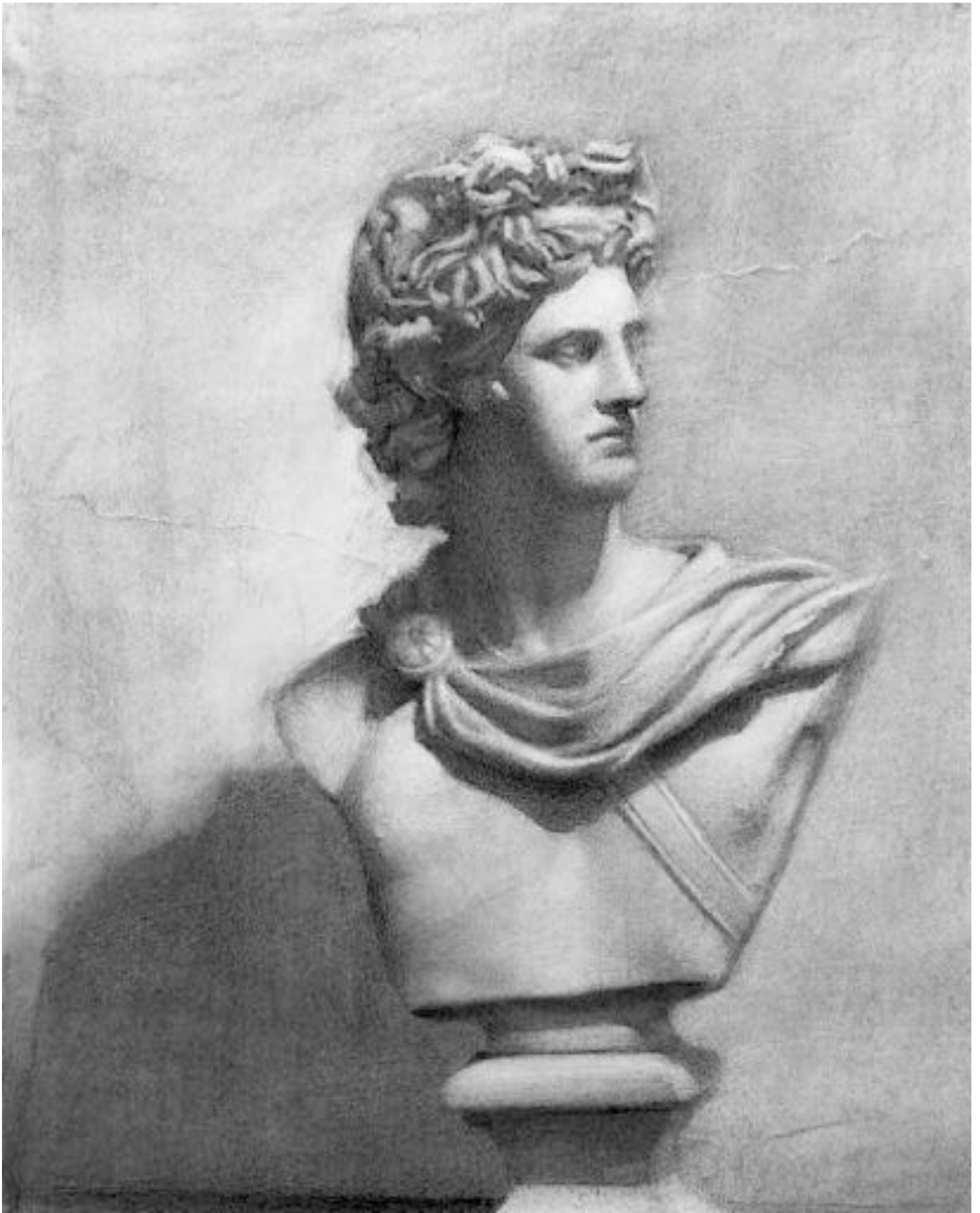


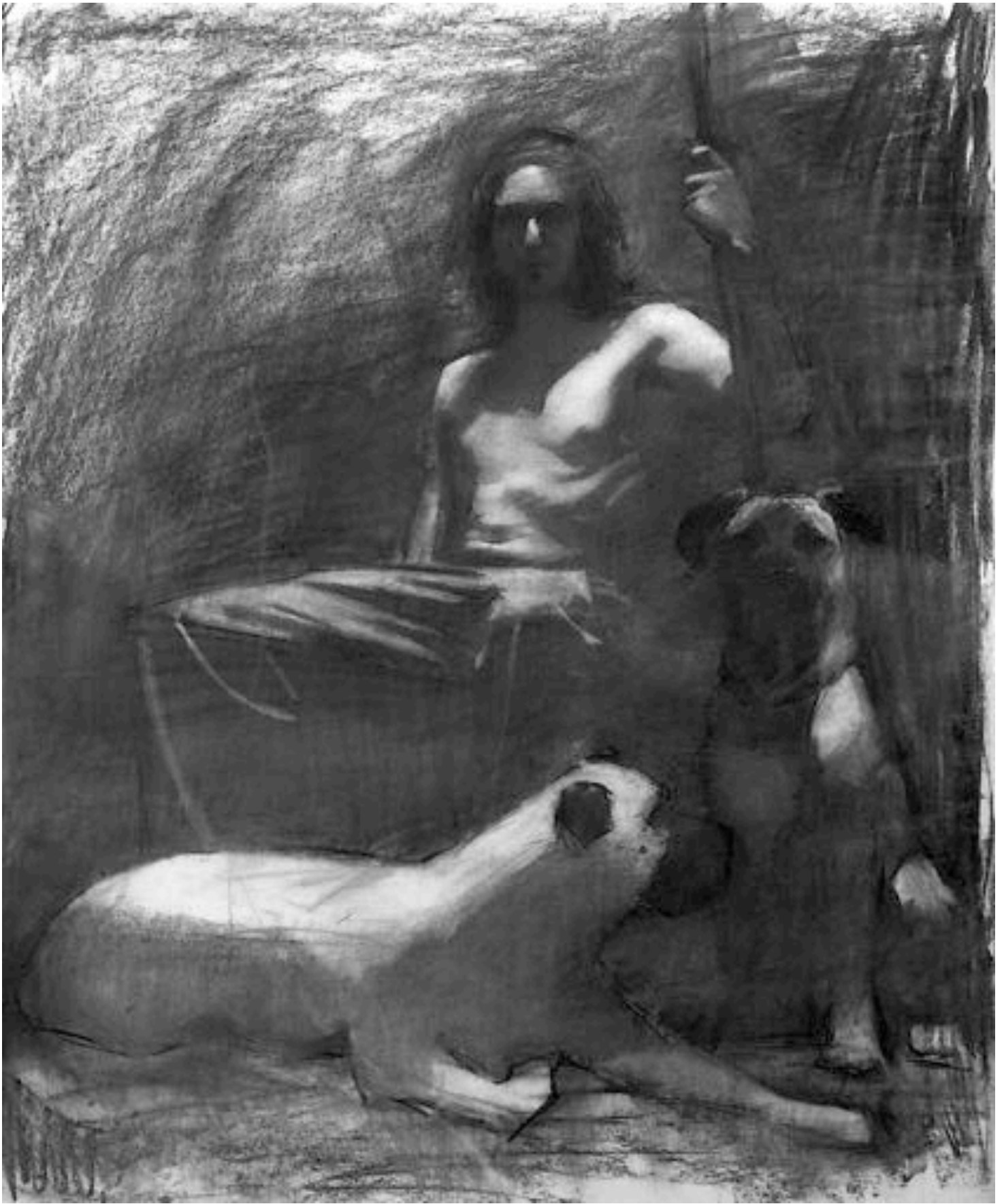












Demonstrations



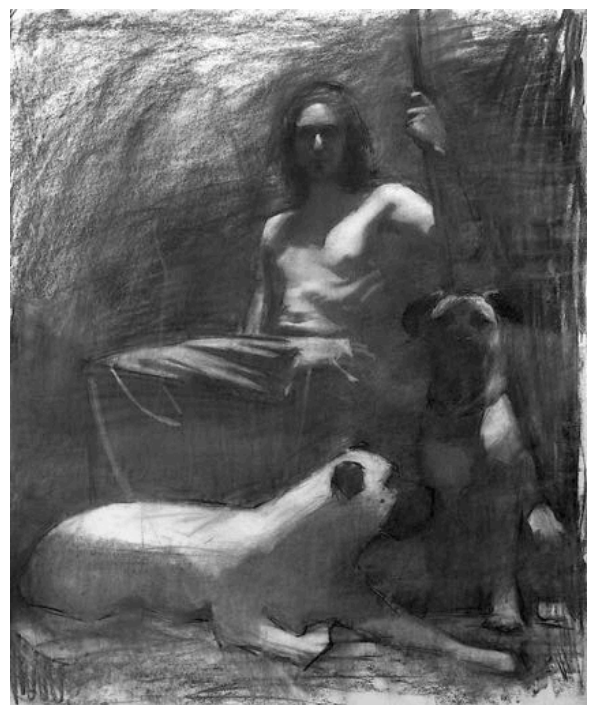
Thumbnail design



Willow Charcoal Block In



Wipe and Beginning of Refinement



Completed Drawing



Willow Charcoal Block In



Directly After Wipe



Beginning of Refinement



Completed Drawing



An example of:

- 1. A 3 minute willow block in with 2 values**
- 2. A drawing after wipe and the addition of 1 value**
- 3. A drawing at 10 minutes, full value range**

